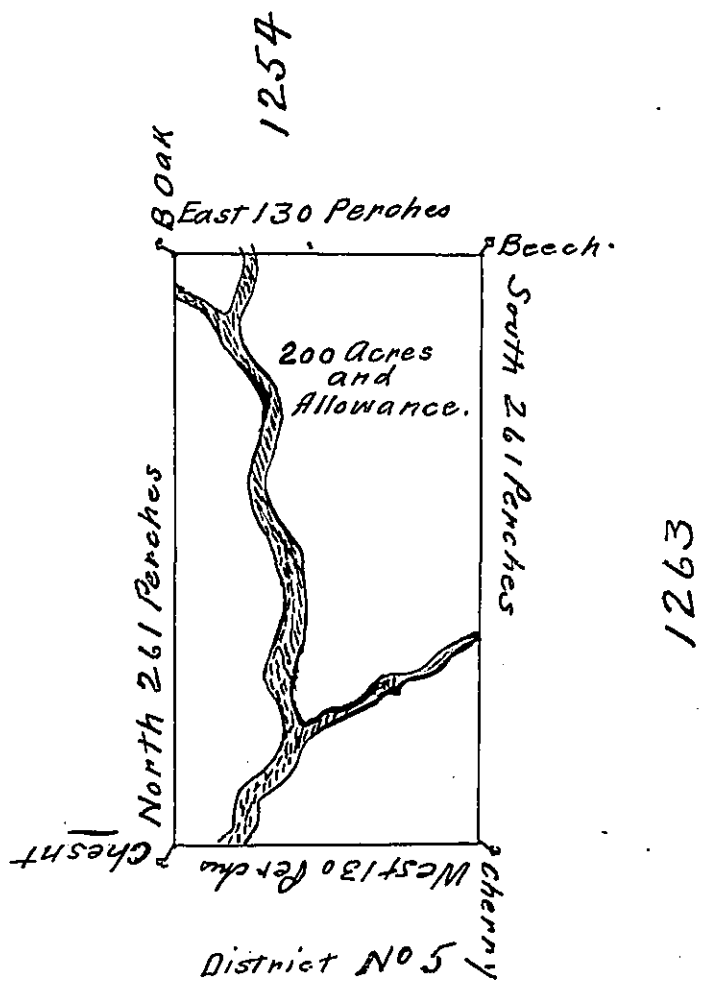


DONATION-LAND in District No 6  
Lot, No M GCLXII



In Pursuance of an Act of General Assembly of the State of Pennsylvania, passed the twenty-fourth Day of February 1785, intitled, 'An Act for directing the Mode of distributing the Donation-Lands promised to the Troops by this Commonwealth, and by Order of the Surveyor General, with the Approbation of the Honourable the Executive-Council, I have Surveyed on the third Day of December 1785, the above described Tract of Two hundred Acres of Land, and Allowance of Six per Cent for Roads, &c. No. 1262. Situate in District No. 6, on the West Side of the Allegheny River, in the County of Westmoreland.

John Lukens, Esq.  
Surveyor-General.

Ja: Chrystie Deputy  
Surveyor.

IN TESTIMONY that the above is a copy of the original remaining on file in the Department of Internal Affairs of Pennsylvania, made conformably to an Act of Assembly approved the 16th day of February, 1833, I have hereunto set my Hand and caused the Seal of said Department to be affixed at Harrisburg, this Ninth day of June 1908

*Henry Hoover*  
Secretary of Internal Affairs.